

Welcome to Costock Village Hall Instructions for Heating and Hot Water

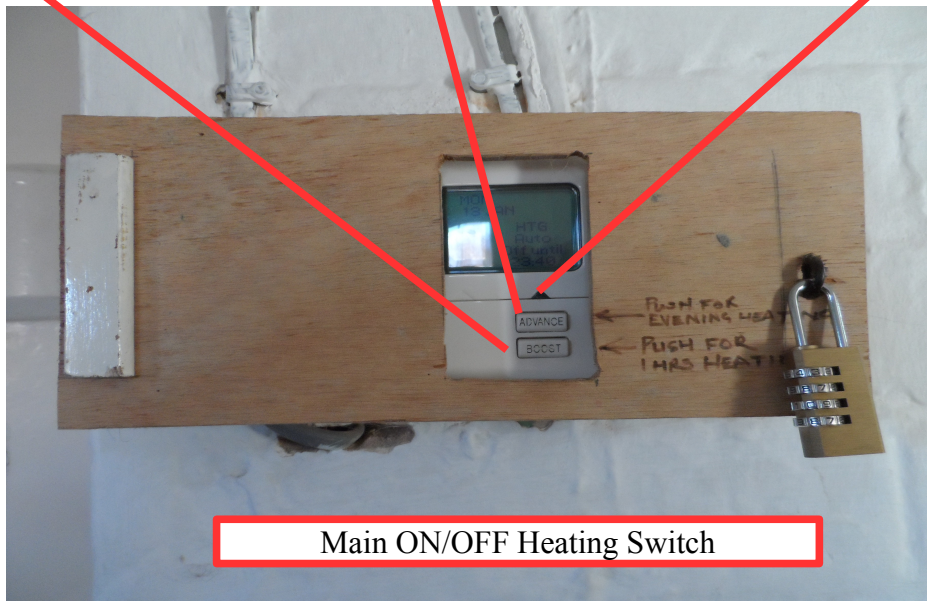
In the entrance lobby is the main on/off heating switch,
if the red light is on then the heating should also be on
If the red light is off follow the instructions below

PUSH BOTTOM BUTTON
UNTIL RED LIGHT COMES
ON FOR ONE HOURS
HEATING, PREFERABLE

OR

PUSH TOP BUTTON UNTIL
RED LIGHT COMES ON FOR
CONTINUOUS HEAT. PLEASE
REMEMBER TO SWITCH OFF

RED LIGHT



If after a few minutes the heater has not started check that the wall thermostats are turned to 65 of

If after a further few minutes the heating has not started then check the heater pilot light. Go to the lobby in the Ladies toilet open the door facing you to locate the Heater for the warm air system and you will find instructions to light the **pilot light** and how to put on the **hot water** system to the toilets and the kitchen sink.

For hot water to the Bar Sink the switch is under the Right Hand Base Unit Cupboard , please ensure this is switched off after use Thanks.



Warm Air Gas Heater

Relighting the pilot light

Firstly check to see if the pilot light is on

LIFT AND REMOVE
BOTTOM COVER
REPLACE COVER AFTER
USE

VIEW PILOT LIGHT AT
BOTTOM OF UNIT. WITH
COVER OFF

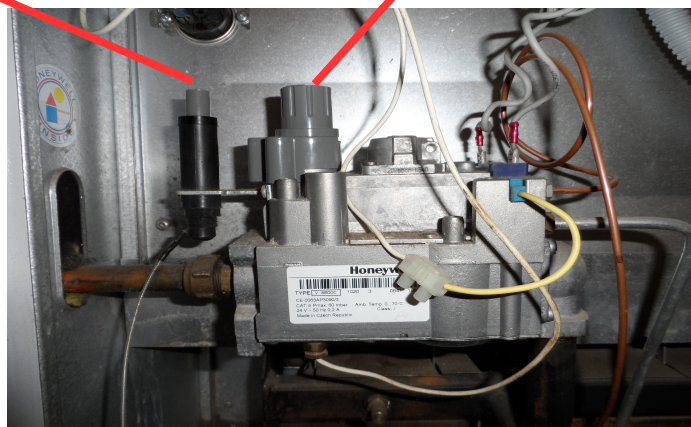


If the pilot light is out then

PUSH AND HOLD DOWN THE GAS VALVE, WAIT FOR APPX 4 SECS THEN STILL HOLDING DOWN THE GAS VALVE PUSH THE IGNITOR 3 OR 4 TIMES. WAIT FOR ABOUT 10 SECS AND LET GO OF THE GAS VALVE. CHECK THAT THE BURNER IS LIT. IF THE PILOT LIGHT REMAINS OUT TRY ONE MORE TIME ONLY.

IGNITOR

GAS VALVE



IF ALL ELSE FAILS CALL JOHNC ON 853535 OR JOHNB ON 856621

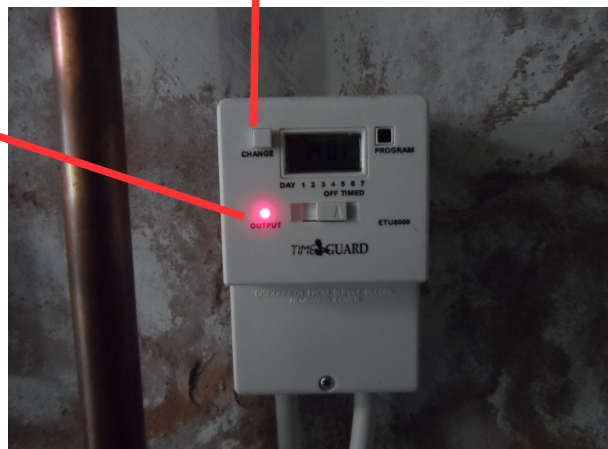
HOT WATER TO TOILET SINKS AND KITCHEN SINK

MAKE SURE THE MAIN SWITCH IS
TURNED ON



PUSH THE TOP RIGHT HAND SWITCH TO
TURN ON WATER HEATER, THE RED
LIGHT SHOULD COME ON..

IF THIS RED LIGHT IS ON
THE HEATING IS ON



**NOTE IT WILL TAKE A WHILE FOR THE
WATER TO GET HOT PLEASE WAIT**